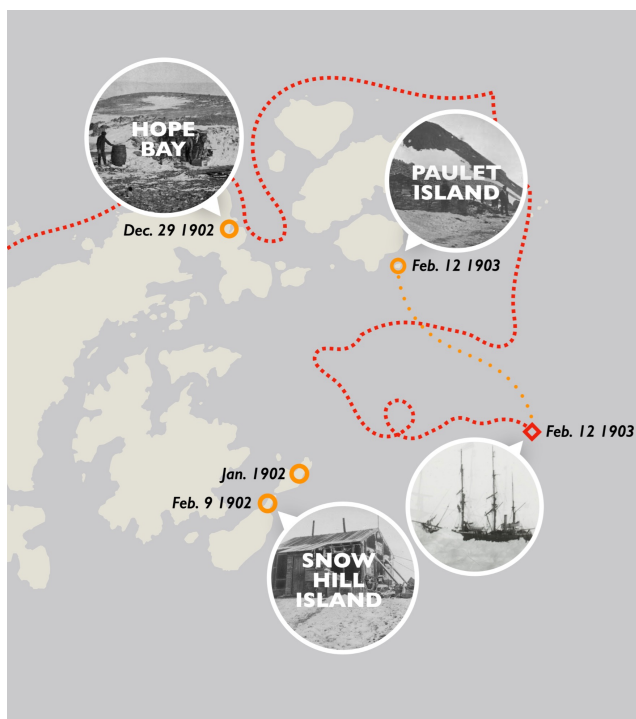


Investigation and preservation of Antarctic maritime heritage (T8 & T6)



CHAQ2020 – CULTURAL HERITAGE IN ANTARCTICA SWEDISH-ARGENTINE EXPEDITION

DIRECCIÓN NACIONAL DEL ANTÁRTICO
INSTITUTO ANTÁRTICO ARGENTINO
SWEDISH POLAR RESEARCH SECRETARIAT
SWEDISH NATIONAL HERITAGE BOARD



**POLARFORSKNINGS
SEKRETARIATET**
SWEDISH POLAR RESEARCH SECRETARIAT

Pulse of the Weddell Sea – Planning workshop
Abisko March 2024

The shipwreck *Antarctic*

Investigation and preservation of Antarctic maritime heritage (T8 & T6)

Principal Investigator:

Gunnar Almevik, UGOT Conservation, cultural heritage & conservation

Co-PI:

Jonathan Westin, UGOT, GRIDH, digitization

Participant(s):

Martin Jakobsson, SU Geological Sciences

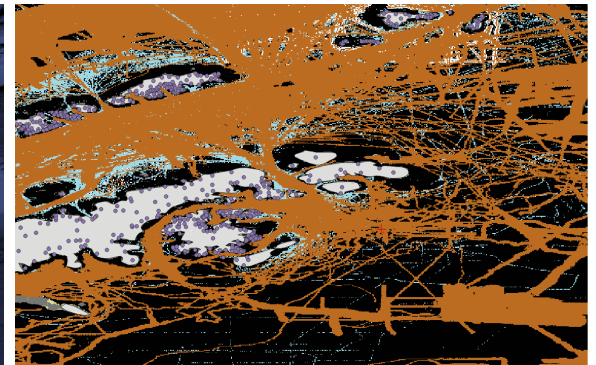
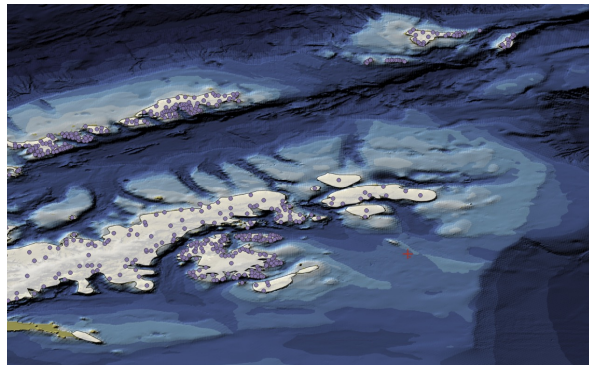
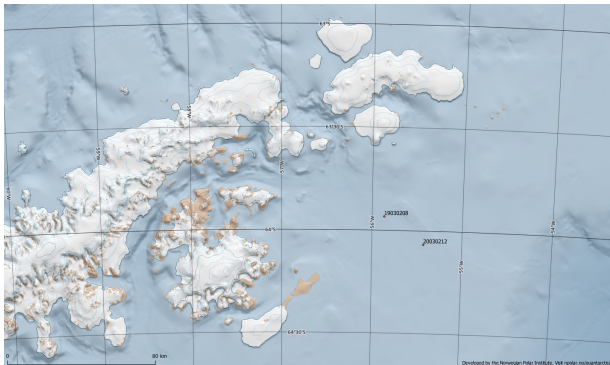
Anna Arnberg, Museum of Wrecks



Research question and objectives

Where is the shipwreck located and in what condition is it?

- to locate and scan the shipwreck in 3D,
- to make the 3D data available for research and public display,
- to provide a knowledgebase for a possible nomination to the Historic Sites and Monuments list (HSM)



Type of data collection & logistic support requirements

- The Shipwreck is located in **Grahamland** in the west Weddell sea in water **300-500m**.
- The most feasible period for sampling should be in December and January during the Antarctic summer.
- **A multibeam sonar survey for medium-deep water (200 kHz).**
- **An ROV or AUV (eg LoLo) with high definition video, mounted sidescan, multibeam or both** surveys the defined area,
- Investigate the area and object through image capture for **SfM/ 3D photogrammetry** processing and VR application

